



HUTCHIES' TRUTH

A QUARTERLY NEWSLETTER FOR HUTCHINSON BUILDERS

MAY 2014

ARTWORK



THE newly opened Broken Hill Village shopping centre has become a living work of art set against the same western sky that inspired Australian painter, Pro Hart. The complex, which includes a Coles, Liquorland, Target, Cheap as Chips and 12 speciality shops, was a fast-tracked design and construction project.

Palm Island housing scheme boost to education and work

NATIONAL rugby league hero and North Queensland Cowboys captain, Johnathan Thurston, has teamed up with Hutchies to encourage indigenous students on Palm Island in North Queensland to attend school more

regularly.

The rugby league promotion is part of an indigenous participation plan associated with the installation of 40 modular houses at the Palm Island community by Hutchies.

Mark Kucks, Hutchies'

indigenous program coordinator, worked with the Cowboys to have their captain donate and sign his Indigenous All Stars, Queensland and Australian gear as a promotion to encourage the students to attend and stay in school.



Hutchies' apprentice and Cowboys Under 20s player, Lenny Maggie (left), was on hand with former Queensland State of Origin player, Dallas Johnson, to present certificates and prizes to Palm Island students.



Johnathan Thurston personally signed the footy gear.

Mark said engaging the kids and their families to be involved in the school environment was always a struggle and impacted on the funding and resources the school draws from the education system which is based on enrolment numbers.

But Hutchies' efforts to help the local community seem to be paying off.

The local Principal on Palm Island, Jeff Jones, said 337 students had enrolled in 2014, up 14

per cent from the previous year.

Hutchies also trains and employs indigenous workers on the State-funded project.

So far, training courses in traffic management and security services have been conducted, with a number of training participants now part of the 24 local indigenous Palm Islanders who have been employed in different elements of the construction program.



Ministerial thanks

MINISTER for Education, Training and Employment, John-Paul Langbroek, has thanked Hutchies for its contribution to creating “a highly skilled and productive Queensland”.



Mr Langbroek (pictured) congratulated chairman Scott Hutchinson for the commitment by Hutchies to apprenticeship employment throughout 2013.

“As one of the largest employers of apprentices in Queensland, you are helping to drive a highly skilled and

productive Queensland and your important contribution in this area is recognised and appreciated,” said Mr Langbroek.

“Increasing the performance of the apprenticeship system is a main focus of our reforms, with Queensland needing more apprentices in priority industry sectors.

“Thankyou for your ongoing commitment to apprenticeship employment in Queensland.”

HUTCHIES is strengthening its “health and safety” and “industrial relations” capability with the appointment of several new people to our team.

Jamie McQueen comes on board heading up Industrial Relations and joins Garry Partridge and Kev Heenan. Also returning to Hutchies is Rob (Rocky) Gordon, an experienced health and safety/industrial relations operative in the field.

Brian Murphy starts shortly and will be heading up Health & Safety with Gareth Davies responsible for Hutchies’ Corporate.

PK Wilson makes up the final part of Hutchies’ Workplace Relations team heading up the Secretariat.

This is a relatively substantial move by Hutchies to deal with the CFMEU’s aggressive build-up on the industrial relations front in Queensland over the past two years.

Hutchies’ traditional relationship model with the unions that goes back 20 years is no longer working effectively.

Unfortunately, the CFMEU is simply not complying with the law and, in the process, placing Hutchies, its subbies and workers in a difficult and unacceptable situation.

In our society, nobody breaks the law without being held accountable by the authorities and that includes the building unions in Queensland.

The Fair Work Act 2009 prescribes the workplace relations requirements for all workplaces including building sites.

It was introduced by the Rudd and Gillard Governments and has not been amended

in any way since by the Abbot Federal Government.

All we ask is that the building unions comply with the law. There is no move to erode workers’ wages and conditions and no suggestion of applying poor health and safety practices.

We simply need to apply the laws of the land and we expect the building unions to do the same.

Holding a Federal Permit, issuing “Right of Entry” notices, observing “Freedom of Association” laws and not causing workers to withdraw their labour in an unlawful way are all pretty easy things for building unions to deal with.

The building unions, in the main, have been representing their members well for 150 years; there is no need for the unlawful attitude it is displaying recently throughout Queensland.

Hutchies’ preferred industrial relations model revolves around genuine communication and relationships with the building unions and traditionally this has resulted in a relatively balanced outcome for our projects.

Nevertheless, in the current environment, we will do whatever it takes to protect our business, our 1,300 direct employees and the thousands of subbies and workers spread across our projects.

– Greg Quinn



Urban house painting – before ... and after.

EIGHT indigenous students recently attended a 12-week painting program in Brisbane delivered by Hutchies’ Gold Coast School of Construction, in conjunction with Red Cross Australia and Black Housing Community Services.

During the program the students completed their Certificate I in Construction.

They were exposed to five weeks of practical painting and had driving lessons for those who

Urban indigenous painting

did not already have their licences.

The students also received instruction in nutrition and work ethics by the Red Cross.

During the painting stage, under the guidance of Rai Malisaukas, workforce development trainer, the students painted two Black Community Service houses in Bulimba.

The participants were taught the basics in painting and decoration, including preparation, paint application, construction methods on a job site, timekeeping and cleaning up.

When the weather was not conducive to painting outside, the group visited and trained at the GCSC campus at Yatala.

Market demand sparks an early start for Moko

HUTCHIES' experience helped it win a new \$19.5 million project on Queensland's Sunshine Coast.

Moko, on Lake Kawana in Maroochydore, will feature 55 one, two and three-bedroom apartments, townhouses and lofts attached to a convenience supermarket, waterfront restaurant and specialty shops.

Moko spokesman, Greg Tuckwell, said he was delighted to have such a high profile and successful building company construct the mixed use development.

"Hutchinsons has over 100 years' experience developing projects throughout Australia, so we have great confidence that they can deliver the project on time and within budget," said Mr Tuckwell.

"Construction of Moko has



Moko, a mixed-use development project on Queensland's Sunshine Coast, is due to start soon.

been brought forward following a turn around in demand for units and apartments on the Sunshine Coast.

"Following strong sales results late last year, construction will start mid-2014 with completion mid to late 2015."

Hutchies' area manager,

Michael Michell, said he was pleased to have won the tender and was excited to be able to construct such an innovative mixed-use development.

"We have great experience with similar projects on the coast including Sea Pearl at Mooloolaba and White Shells apartments in

Maroocha," he said.

"The design of Moko is excellent and, from an investment point of view, it represents a tremendous opportunity because of its great north-facing waterfront location, as well as its close proximity to employment, entertainment and recreational hubs."

Back for the long haul in the Pilbara



The boys are back in town ... Hutchies' team members (L-R) Anthony Cuic, Joe Newrick, Jeremy Scadden and Scott Cracknell in South Hedland.

HUTCHIES is ramping up operations in the Pilbara, Western Australia, after a slowdown which resulted in operations and workers moving elsewhere for a period.

But the team is back in town, building 28 new houses in South Hedland for BHP.

Health, safety and environmental manager, Jeremy Scadden, said Hutchies was there to stay.

"Last time there were a lot of fly-in/fly-out workers, but now almost all of our boys are based here," said Jeremy.

"We are here to stay long term and we are keen to contribute to the growth and to turn this into a bustling little town."

Jeremy said Hutchies also was keen to contribute to the community as a whole and often put on barbecues and beers for the boys who volunteered to do beach clean-ups.

The 10-month project in South Hedland has about 70 workers on site and is due for completion in July.

Site manager, Joe Newrick, said the team was eager to get it done earlier and move on to new work.

"Newman is about to start and we've got another project in Jigalong as well," said Joe.

"The projects in Newman include development of 15 houses and refurbishment of another four with tendering underway on a broad range of projects.

"We are definitely in here for the long haul."



Health check-up at Biloeela

QUEENSLAND Minister for Health, Lawrence Springborg, recently visited the Biloeela Hospital to meet staff and inspect the progress of Hutchies' \$7.15 million rural rectification works.

Shown at the inspection are (from left) Rod Hutcheon, Rural Health Services Division executive director; Charles Ware, Central Queensland Hospital and Health Board chair; Len Richards, Central Queensland Hospital and Health Service chief executive; Lawrence Springborg, Minister for Health; Lachlan Bloomfield, Hutchies; Kim Siegmeier, nurse unit manager; and Dr Charles Mutandwa, medical superintendent with right of private practice.

A recent Shave for a Cure fundraiser on the Biloeela Hospital site raised \$15,000 for the Leukaemia Foundation.



On site at Pimpama Junction are (L-R) developer, Scott Spanton, of Tipalea partners; Deputy Mayor of the Gold Coast, Donna Gates; and Hutchies' Rob Diamond.

Pimpama Junction on track

PIMPAMA Junction is on track to begin trading within weeks.

Developed by Tipalea Partners, Pimpama Junction is the first major shopping centre to be built on the eastern side of the M1 in the burgeoning Coomera/Pimpama growth corridor.

As well as Woolworths there are 21 other tenancies in the development which is close to completion.

Beehive honey stirs up a huge hornets' nest

CHAIRMAN Scott Hutchinson stirred up a hornets' nest when he jokingly suggested recently that bees' honey should be poured on a partner, not wasted on toast.

Business circles buzzed with excitement after *The Courier-Mail* newspaper reported that Australia's largest family-owned construction firm was now producing its own range of honey.

The media report appeared after Hutchies revealed its plans to put beehives in its offices in Queensland, New South Wales and Victoria.

But *The Courier-Mail* said that Capilano Honey had nothing to fear from the builder.

"Despite being one of the country's most successful entrepreneurial families, Hutchies has no intention of getting into the bee business on a commercial scale," confirmed *The Courier-Mail*.

Scott said the honey would

be bottled and given away to clients and business associates as a promotional item.

"My joke that the honey should be poured on a partner instead of toast was what got me into hot water," Scott confessed.

"Although I did get a lot of support for that suggestion through social media.

"But, on a serious note, Hutchies has joined the urban bee movement to help stop the decline in the bee population which is vital for pollination of flowers and food crops."

In Brisbane, The Downtown Honey Company harvests the honey for Hutchies and expects to produce 500 bottles a year.

As Cyclone Ita bore down on North Queensland last month, all Hutchies' sites prepared for the worst.

At the Cairns Smithfield office one of the most important tasks was protecting the workplace of



Deb Zacher and Jon-Paul Floyd with a Hutchies' hive in Townsville.

the 60,000 new "staff" in the beehives.

Maree Beavon and Paul De Jong (COTY 1995) secured the new beehives in preparation for the worst from Ita and, although winds reached 70 km/h, there was no damage to the bee colony.

Meanwhile, Townsville office has had its first harvest after 22 days with three frames producing 7.5 kg of honey.



Chairman Scott Hutchinson with a bottle of Hutchies' Honey.



Paul De Jong (COTY 1995) and Maree Beavon protected Cairns hives from Cyclone Ita.

Woolworths opens in Airlie

DESPITE unpredictable weather conditions in north Queensland, Hutchies has delivered Airlie Beach's new Woolworths on time and on budget.

The \$8.4 million complex, with 2800m² of supermarket floorspace, has a pedestrian walkway linking it to the Airlie Beach village.

The supermarket's customer carpark also includes parking spaces for the general public which is in short supply in Airlie Beach.



Gladstone's new waterfront precinct ready for summer



A new world-class waterfront precinct in Gladstone will be ready for summer.

EAST Shores Gladstone Coal Exporters Maritime Precinct redevelopment by Hutchies has reached an exciting stage as the landscape at Auckland Inlet continues to change.

Bulk earthworks have been concluded and underground works are nearing completion.

The next phase of the project will see the construction of above-ground facilities and landscaping on the new parklands.

The waterfront boardwalk and viewing platform is taking shape with installation of concrete deck units now complete and construction and installation of shade structures well underway.

Stage One of the Project involves the relocation of historical artefacts from Gladstone's Maritime Museum, including navigational buoys, anchors and bollards from the old Auckland Point Wharf.

The world-class waterfront precinct will open later this year in plenty of time for the community to enjoy the new parklands over summer.

The \$42 million project is being delivered by Gladstone Ports Corporation and Wiggins Island Coal Export Terminal.

Gold Coast School on the move again

HUTCHIES' Gold Coast School of Construction (GCSC) is opening another training school, this time in the Brisbane CBD.

The school was established at Yatala in 2010 and, because of its success in placing graduates in employment, the programs and training locations have expanded.

The GCSC currently has campuses in Yatala and Toowoomba and trains, with funding support from Construction Skills Queensland, school students and young people looking to establish a career in the construction industry.

Underpinning this success for the GCSC is the importance of training students in the real world with the emphasis on gaining work experience.

As a result, all training

programs are located on active construction sites.

The first GCSC training school in Brisbane is on Hutchies' Arena site in South Brisbane, thanks to John Berlese (COTY 2006) and his team.

This training facility will be the central location for the GCSC for the first six months, after which time it will be moved to another site within the city.

The trainees on the site will undergo pre-trade training and complete work experience on this building site as well as on other sites in the CBD.

The ultimate goal is for graduates to gain full-time employment in the construction industry.



Surgical precision on hospital site

WITH the precision of a team of surgeons, Hutchies' crew manoeuvred this 55-tonne crane into an extremely tight site at the Royal Brisbane Hospital ... and did it with a 45mm clearance. A bonus was that the outriggers landed on support columns for the service tunnel beneath.



Talking heads at UDIA congress

CHAIRMAN Scott Hutchinson made a guest appearance at the recent Urban Development Institute of Australia National Congress attended by 500 developers from all around Australia.

A highlight of the three-day event was an "on the couch" segment hosted by Peter Thompson, presenter of the ABC's *Talking Heads* program, which featured intimate conversations with prominent Australians.

The talking heads at the UDIA congress were Scott and David Kier, from Devine.

The moderator questioned the participants on a range of topics including industry challenges of the past few years, the industry's sustainability and its future.

He also wanted to know why the Hutchies' brand had been so successful over the past 100 years.

Like us on **Facebook**:

<http://www.facebook.com/hutchies1912>

Follow us on **Twitter**:

<http://twitter.com/hutchies1912>

Picture us on **Instagram**: hutchies1912

See our company page on **LinkedIn**:

http://www.linkedin.com/company/91031?trk=pro_other_cmpy



Being drilled on safety



Fourth year apprentice, Aaron Hagen, receives his safety award from Chris Taylor and Andy Becconsall.

SAFETY awareness is a priority on the Lennox/Next Hotel refit project in the Brisbane CBD where apprentices take part in a unique safety reward scheme.

Apprentice development coordinator, Andy Becconsall, works with the nine apprentices on site to ensure they meet expectations.

In conjunction with site supervisor, Chris Taylor, he has initiated the monthly safety award for the apprentice who demonstrates the best approach to performing

tasks in the safest manner,

"As far as I am aware, this is a first on a Hutchies' job", said Andy.

"A monthly prize of a cordless drill/torch and battery kit plus other Hutchies' product is great recognition of good practice."

The Hutchies' apprentice training program aims to create future leaders who are role models for others and one of its priorities is to ensure that safety is front and centre of everything on site.

LAST year Matthew was placed as a school based apprentice and I would like to thank you for giving Matt the opportunity to do his apprenticeship with Hutchies.

Hutchies provides Matt with a great network of support and training.

He enjoys what he does, making it easy for him to be motivated to go to work.

Getting Matt out of bed to go to school used to be a challenge, yet now he gets himself up at 5am to go to work ... not a hassle at all!

Matt has become more responsible even to the extent that he is starting to understand the value of money!

I'm not quite sure what you guys do ... but it's good for Matt!

I don't say this lightly... Hutchies has changed his life!

Denise and I are very proud of him and again we would like to

thank you for the opportunity you have given him.

Steve Ventrella

HI there!

I just watched the Undercover show and it appears it was around the 100 year anniversary in 2012.

It was very refreshing and a pleasure to watch.

It seems you have an awesome culture there and you obviously look after your people.

I just wanted to share my delight in learning about Hutchinson Builders and being a great place to work.

I am a sparkie by trade and

for the last 15 years have been in various sales roles.

Thankyou for sharing your story with us and all the best for the next 100 years.

Regards,
Greg Clinton

MY name is Bruno and I live in Portugal where I saw your show on television.

Loved your company and would like to migrate to Australia and work for you.

I have been a firefighter in Portugal for 14 years.

Big hug,
Bruno Guerreiro

FEEDBACK



CAN I say what a pleasure it has been working with you and your team.

You have been so hardworking and always available at ridiculous hours on Sundays and after hours to answer our calls.

Greg, thankyou for having Chris involved in our project.

It has been a pleasure dealing with you too Greg, your leadership and ethics are appreciated by us at Aquarius as well.

The job is now completed and I think I will have a dip myself in the plunge pools to celebrate.

Hope you are having a great break and thanks again to both of you.

Best wishes and thankyou,
Dr Ingrid Tall
Cosmetic Image Clinics

Bunny girls in Easter parade



In Toowoomba Bec Martin, Nicole Apelt, Kiralie Harris and Rachael Mackenzie dressed for the occasion, organised an office Easter egg hunt and celebrated with cupcakes and hot cross buns for morning tea.



HUTCHIES' team members got into the Easter spirit before the holiday break.

In Brisbane (right), Sky Liston, Tabi Ward and Brooke Wilson spread Easter cheer and gifts throughout the office.

A new era for international hotels forecast for Brisbane



Hotel owner, Sam Chong, celebrates the Year of the Horse at Four Points by Sheraton in Mary Street, Brisbane.

BRISBANE Lord Mayor Graham Quirk recently opened the Hutchies-built Four Points by Sheraton – the first internationally branded, new-build hotel property for the city in the past 16 years.

The Lord Mayor said the Four Points by Sheraton, a 33-storey hotel skyscraper with 246 rooms in Mary Street, was an example of the success of the city's Hotel Investment Strategy.

He said the strategy was developed after research showed a lack of hotel rooms meant Brisbane was missing out on about 87,000 visitors and \$130 million in visitor expenditure every year.

"To further assist the future investment and development of four and five-star branded hotels, Brisbane City Council also introduced a moratorium on infrastructure charges, a move which is clearly starting to pay dividends," said Ald Quirk.

"Prior to this moratorium, there had been no new major CBD hotels in a decade. But, since July 2011, 10 hotel development applications have been approved.

"It is always a good sign for Brisbane's economy when major international brands set up shop and serve as a drawcard for interstate and international tourists," he said.

Final stage completed for Brothers

BROTHERS Junior Rugby Club recently celebrated the official opening of the final stage of the clubhouse expansion at Hutchinson Park, in Grafton Street, Windsor.

The opening was part of the annual Juniors Carnival Day at Hutchinson Park.

Brothers spokesman, Hans Pearson, said the landmark project, with a total cost of more than \$300,000, had been funded through the club's cash reserves, partnership funding from St Margaret's School, Little Athletics and

its ground partner, Hutchies.

"The project was project managed from inception by the Brothers committee and will offer a vastly improved experience for our Under 6s to Under 12s players and, furthermore, is adequate to support their needs for many, many years to come," said Hans.

"A huge thankyou to our construction partner, Hutchinson Builders. Without their generous assistance and support this project would still be on the drawing board."



The final stage of the clubhouse expansion for Brothers Junior Rugby Club was the newly completed undercover area.

Ladies turn the tables on tradies



A HUTCHIES' worksite in Sydney was chosen by Channel 9's *Today* show for female "workers" to stick it to male passers-by.

The television segment was triggered by an advertisement for Snickers which featured tradies cat-calling female pedestrians.

Dressed in fluoro work wear and sporting hard hats, the *Today* show females perched themselves above a Sydney street to give jeering men a

taste of their own medicine.

Yelling at the top of their lungs, the women randomly targeted men with comments like: "I don't care what kind of car you drive, I care what drives you", "Size doesn't matter, unless you're talking about a television" and "Leave the toilet seat up - it's sexy".

None of the men seemed too bothered by the attention, with many waving back and blowing kisses.

Chook wheel spins again



THE Friday 4pm barbecues are back at Toowong ... and so is the popular chook wheel.

Joey Cassin was a recent winner and he took home a bottle of Jack's famous tequila and a frozen chook.

Dave departs from Townsville office

AFTER 26 years with the Townsville office, Dave Christoffersen recently retired.

At his farewell celebration Chairman Scott Hutchinson thanked Dave for his time and commitment to Hutchies and his clients and wished him all the best in future endeavours.

Scott also presented Dave with a framed Lions jersey.

"This is unique because it was signed by the complete team and the former chairman, Angus Johnson, who happens to be my brother-in-law," said Scott.

"There will be no more like this one."

Dave said Hutchies was a great company to work for.

"Scott Hutchinson is one hell of a man and Jack Hutchinson is one



At Hutchies' farewell (from left) Pierre Kessler, Noel O'Brien, Dave Christoffersen, Giancarlo Pozzebon, Carmel Christoffersen, Laura Delaney and Scott.

of the world's true gentlemen," said Dave.

Shortly after his retirement, Dave

also received the Club Person of the Year award from the Townsville Crocodiles.



757 Ann Street ... rising out of Fortitude Valley.



THE \$13.6 million refurbishment of Seahaven Apartments resort in Hastings Street, Noosa Heads was completed in time for the busy tourist season.

Learning curve for executives

MEMBERS of Construction Skills Queensland (CSQ), one of the major training funding sources in Queensland, were invited to see how their funding is making a positive impact at Hutchies.

For many of the CSQ executives, it was their first visit to Hutchinson Builders ... and a perfect opportunity to illustrate how the training funds are spent.

The executives' day was packed with positive experiences including White Card training from one of Hutchies' workforce development trainers.

They also listened to presentations by various members of the training team showcasing the outcomes of this partnership and enjoyed a healthy and nutritious lunch expertly prepared and cooked by three apprentices who know the benefits of this



Members of Construction Skills Queensland during their visit to Hutchies.

funding with their own training.

Jared Johnson, Mitchell Hanscomb and Kurt Boyd-Bush covered the

topic of personal development which includes a healthy eating module as part of their apprenticeship pre-trade course

at Hutchies' school at Yatala.

The executives' day concluded with a site tour of 'The Milton'.

Feedback from CSQ about the day was positive and the guests said they thoroughly enjoyed the experience.



The Milton luxury apartment development to be built over 30 levels is gaining height.

The Milton making its mark

CONSTRUCTION is well underway with the landmark The Milton project in Railway Terrace in the heart of the trendy inner-city Brisbane suburb.

On completion, The Milton will

consist of 298 luxury apartments over 30 levels with resort-style amenities, club lounge, top floor observation deck as well as on site premium commercial and retail suites.

Toowoomba's Kokoda Challenge



At the launch were (from left) Ian Knox, Peter Rookas, Tressa Lindenberg, Rob Weymouth (COTY 1993) and Richard Palmer.

HUTCHIES recently sponsored the Kokoda Challenge in Toowoomba with client, Ian Knox, of Hallmark Property.

Hutchies' members who participated included Rob Weymouth (COTY 1993), Nick Barker, Sean Lees, Devang Sanghvi, Tim Colthup and Marty Quinlan.

In partnership with the Rotary Club of Toowoomba South, the Kokoda Challenge raises funds to encourage young people to be involved in character building community work in Papua New Guinea and at home in Australia in the spirit of Kokoda.

Derek's big 50!

There was no shortage of reminders for Derek McVeigh from the Toowoomba office when he notched up a milestone recently.



John Jarratt ... reprises his murderous role in Wolf Creek 2.

Wolf Creek a howling success

HUTCHIES' property at Stratton Street, Fortitude Valley, has developed a reputation as a good hangout for creative types, including musicians, artists and writers. Recently it added film to its list of devotees when Australian actor, John Jarratt, chose the venue for media previews for his grisly horror flick, *Wolf Creek 2*, which appeared in national cinemas on February 20.



Riders in the 220 km Ride to Conquer Cancer event on August 17 and 18 are (from left) Rai Malisaukas, Michelle Buckland, Aaron Michael, Mark Buckland, Andy Becconsall and Peter Hurley.

Gearing up for charity ride for cancer

A RECENT charity fundraising event at Bunnings in Noosaville raised more than \$1,500 to help find a cure for cancer through scientific research.

The fundraising goal is for \$15,000 by August to sponsor six riders in the 220 km Ride to Conquer Cancer on August 17 and 18.

All six members of the riding team were there flipping snags and selling drinks.

Michelle Buckland also sold choco-

lates in the foyer with her daughters and Peter's wife, Pauline, as helpers.

The team raised \$1,317 from the barbecue and \$220 from chocolate sales.

They thanked Hutchies for making a donation to purchase food and thanked Stacks Building Supplies and Coastal Fasteners for contributions of onions, ice and drinks.

Brisbane supporters will be able to make contributions as soon as the organisers plan more events.



A tinge of green in the Outback

Broken Hill turned from brown to green for its St Patrick's Race Club meeting and Hutchies' team members got in on the act. The event was sponsored by Hutchies, Coles, Liquorland and Broken Hill Village which opened on April 16. Shown at the race meeting are (from left) Ross Durey (COTY 2009), Chris Durey, Scott Robinson (Coles Property and Development Group), Dan Hall, Sarah Hosking, Matthew McEwan, and Mathew Kempster.

Farewell to Ken Fennell

CHAIRMAN Scott Hutchinson passed on Hutchies' sympathy to the family and friends of Ken Fennell, a long serving member of the Hutchies' team, who started work as a 15-year-old apprentice with Scott's great-grandfather in 1946.

Ken passed away in January, aged 82 years.

He retired on his 65th birthday on May 10, 1996, after 50 years on the job with Hutchies as a plumber.

Ken wanted to be a carpenter, but plumbing was the only job available at the time in post-war Brisbane, so he took it and never looked back.

On his retirement, Ken was the longest serving member of the Hutchies' team.

Jack Hutchinson said Ken had been a valuable asset and was "a reliable bloke who knew his trade".



Ken Fennell in his final days at Hutchies in 1996.

Ken kept busy in retirement by going back to his first love of working with wood.

He spent many hours in his workshop designing and building toys, jewellery boxes and other clever items.

Ken was the loving husband of Bev (deceased), cherished father and father-in-law of Larry and Debbie and Paula and adored grandpa of Abby and Brett.

Female cyclone hits Byron Bay

USUALLY laid back Byron Bay probably thought the likes of Cyclone Ita had struck when the organisers of the Brisbane Ladies' Weekend Away chose the seaside town as the venue for their annual event.

Eight sisters from Toowoomba were invited to join the Brisbane horde, making a party of 36 for the trip south.

They enjoyed stand up paddle boarding, facials, massages, nail spas, jelly shots and dancing at Cheeky Monkey's nightclub among other things!

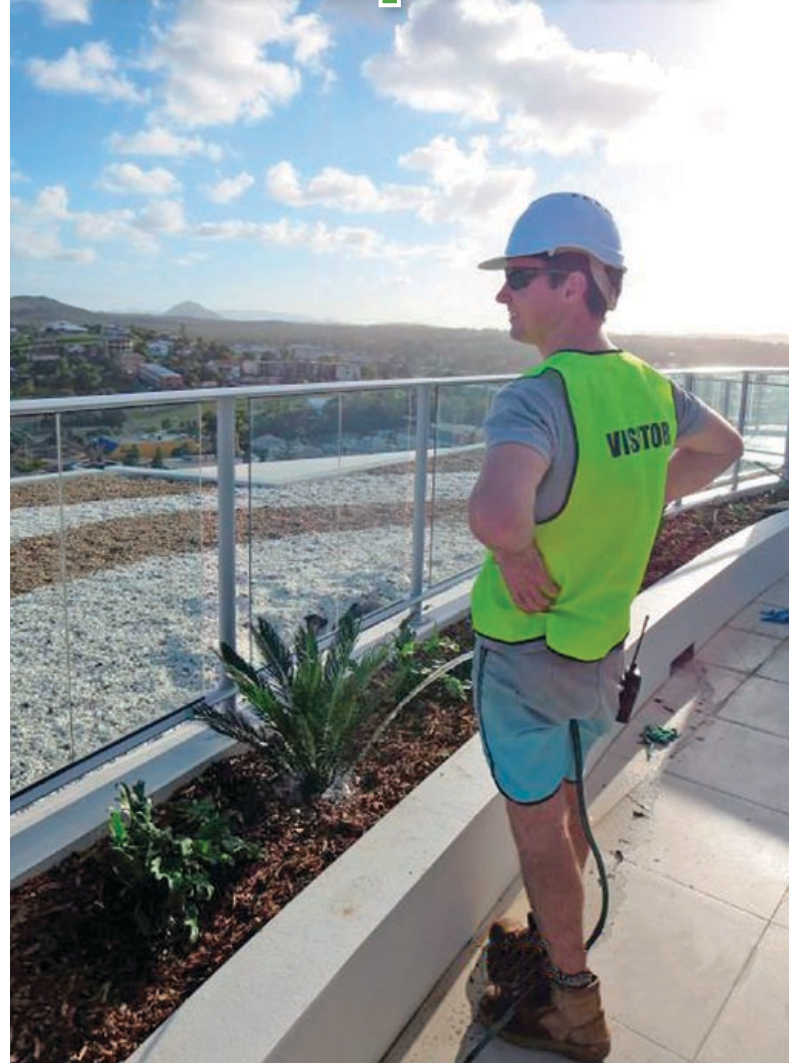


Hutchies' Hobart team members, who supported Light It Up Blue Day (from left) Haylee Pratt, Brian O'Dwyer, Nick Silcox, Kerri Sharman, Carl Fiedler, Victoria Logan, Ian Ramsden and Grant Davey, are pictured outside their newly refurbished offices.

Hobart blue for a good cause

TASMANIA can be cold, but Hutchies' team on the Apple Isle was blue recently for a different reason. The Hobart office dressed in blue to help celebrate Light It Up Blue Day for Autism Awareness.

Waterscape on site



Fraser Waterman gives a personal touch to finishing off landscaping at the Oshen project Yeppoon.

NOOSA CREST EXTERNAL REFURBISHMENT

Job Value: \$2,207,701

Job Description: Involves the refurbishment of balconies and roof terraces including new tiles, balustrading and pool refurbishment.

Hutchies' Team Leader: Michael Michell
 Hutchies' Project Manager: Jarod Dingle
 Hutchies' Administrator: Jarod Dingle
 Hutchies' Site Manager: Jesse Joyce
 Hutchies' Cost Planner: Michael Michell / Terry Lloyd
 Architect Firm: Thompsett Architecture

COLES MERMAID WATERS

Job Value: \$5,285,000

Job Description: The project is an extensive refurbishment of an existing Coles store with approximately 4,800m² gross floor area. A staging plan has been developed in conjunction with store management to allow the store to continue operating while demolition and construction is underway with fully refurbished stages progressively handed back to Coles once they are complete.

Hutchies' Team Leader: Paul Hart
 Hutchies' Project Manager: Grant LeBoutillier
 Hutchies' Administrator: Murray Emmerson
 Hutchies' Site Manager (Days) Richard Ainsworth
 Hutchies' Supervisor (Nights) Glen Robinson
 Hutchies' Cost Planner: Steven Kourevelis
 Architect Firm: TRG
 Struct. Engineering Consult: MPN Consultants
 Mechanical Consultant: DMA Engineers
 Quantity Surveyor: Turner and Townsend
 Electrical Consultant: DMA Engineers
 Client: Coles Supermarkets Australia

MENTAL HEALTH COMMUNITY CARE UNITS, CAIRNS

Job Value: \$7.5M

Job Description: Project is construction of 20 independent living units spread across six separate one and two-storey buildings as well as an administration building with offices, amenities and full BEMS control, and a separate community building, fire pump building and large shed.

Hutchies' Team Leader: Paul De Jong
 Hutchies' Project Manager: Peter Singleton
 Hutchies' Site Manager: Glenn Skaraiev
 Hutchies' Cost Planner: Chris Hattingh
 Architect Firm: Peddle Thorp
 Struct, Civil, & Elec Eng Consult: ARUP
 Client: Queensland Health
 Project Management: Savills Australia

USC, RESOURCE BUILDING

Job Value: \$3,888,902

Job Description: This facility, under construction at the University of the Sunshine Coast (USC) campus at Sippy Downs, consists of a three-level block, concrete, structural steel dimensional structure with a custom orb Colorbond roof due for completion in August 2014.

Hutchies' Team Leader: Michael Michell
 Hutchies' Project Manager: Steven Hodgins

JOBS UPDATE

Hutchies' Administrator: Dominic Tyacke
 Hutchies' Site Manager: Scott Woods
 Hutchies' Supervisor: Jamie Ison
 Hutchies' Cost Planner: Terry Llyod
 Architect Firm: Deicke Richards
 Struct. & Civil Engineer Consult: Inertia Engineering

MENTAL HEALTH COMMUNITY CARE UNITS, TOOWOOMBA

Job Value: \$7.0M

Job Description: Project is the construction of 24 independent living units spread across six separate one and two-storey buildings as well as an administration building with offices, amenities and full BEMS control, and a separate community building.

Hutchies' Team Leader: Robert Weymouth
 Hutchies' Project Manager: Daniel Cooper
 Hutchies' Administrator: Keenan Wolski
 Hutchies' Site Manager: Jono Kings
 Hutchies' Cost Planner: Derek McVeigh
 Architect Firm: Peddle Thorp
 Struct, Civil, & Elec Eng Consult: ARUP
 Client: Queensland Health
 Project Management: Savills Australia

PUNTHILL APARTMENTS, MELBOURNE

Job Value: \$3,321,212

Job Description: Project involves rectification works to an existing six-storey building at 267 Flinders Lane, Melbourne. The residential portions of the building (Punthill Apartments) include a basement car parking level, ground floor apartment foyer/lobby, a mezzanine conference room and five upper level apartment floors. The refurbishment consists of minor demolition, internal/external finishes, DDA compliance and refitting of all major services to meet current BCA requirements.

Hutchies' Team Leader: Paul Hart
 Hutchies' Project Manager: Kruse Carter
 Hutchies' Administrator: Graham Dodge
 Hutchies' Site Manager: Ilias Panayl/ Lindsay Good
 Architect Firm: Peckvonnartel (PVH)
 Struct. Engineering Consult: Hyder Consulting Engineers
 Electrical Consultant: Irwin Consult
 Client: Erison

WARNER MARKETPLACE

Job Value: \$13.3M

Job Description: The Warner Marketplace project consists of the expansion and redevelopment of the existing Warner Village Shopping Centre located at the corner of Old North and Samsonvale Roads, Warner. Works include clearing and demolition of existing property,



Artist's impression of the redevelopment of the existing Warner Village Shopping Centre to be known as Warner Marketplace.

relocation of existing services, extensive civil works providing increased capacity of car parking, construction of a new Aldi store, extension of existing Woolworths, construction of new tenancies and creation of an internal mall. On completion there will be an extra 20 tenancies located in the new shopping centre.

Hutchies' Team Leader: Levi Corby
 Hutchies' Project Manager: Dan Hall
 Hutchies' Administrator: Andrew Peters
 Hutchies' Site Manager: Cody Harris
 Hutchies' Supervisor: Adam Francis
 Hutchies' Cost Planner: Michael Crossin
 Architect Firm: Vabasis
 Struct. Engineering Consult: Farr Engineers
 Civil Engineering Consultant: KN Group
 Quantity Surveyor: Project Strategies Australia
 Electrical Consultant: Building Services Design Client: Warner Village

MASTERS ROUSE HILL

Job Value: \$16M

Job Description: Design and construction of the Masters Home Improvement Centre in Commercial Road, Rouse Hill, consisting of general floor space of 13,660m² with a trade centre, garden centre, offices and public amenities, 361 car spaces, commercial loading zone, landscaping and roadways. The project also consists of a bulky good retail building approximately 1,200m².

Hutchies' Team Leader: Levi Corby
 Hutchies' Project Manager: Josh Fergusson
 Hutchies' Administrator: Alan Lengsfeld
 Hutchies' Site Manager: Wayne Syrch
 Hutchies' Foreman: Joe Jacobsen
 Hutchies' Cost Planner: Brendan Kavanagh
 Architect Firm: Lefler Simes Architects
 Struct. & Civil Engineer Consult: Farr Engineers
 Hydraulic Consultant: BRW Enterprises (QLD)
 Electrical Consultant: Building Services Design Client: Hydrox Nominees

MASTERS DUBBO

Job Value: \$13,987,868

Job Description: The construction of a Masters Home Improvement centre in Dubbo consisting of 11,000m² of floor space with dedicated garden centre area, trade centre as well as two tenancy buildings. The project will be a steel structure on pad footings with tilt-up panels and a car park with associated landscaping.

Hutchies' Team Leader: Levi Corby
 Hutchies' Project Manager: Neil Middleton
 Hutchies' Administrator: Alan Lengsfeld
 Hutchies' Site Manager: Shaun Power
 Hutchies' Cost Planner: Brendan Kavanagh
 Architect Firm: Lefler Simes Architects
 Struct. & Civil Engineer Consult: Farr Engineers

Electrical Consultant: Building Services Design

USC, ENGINEERING LEARNING HUB

Job Value: \$18,123,915

Job Description: The University of the Sunshine Coast's Engineering Learning Hub, to be constructed at Sippy Downs, will be a state-of-the-art, 5 Star Green Star benchmarked learning and teaching complex. It will provide approximately 6,500m² of floor space over four levels and will feature an integrated suite including world class visualisation theatres for immersive learning at USC and USQ. Combining visualisation techniques with 3D and virtual reality technologies will allow students to see and interact with life-size 3D simulation of objects and spaces. Teaching spaces will include flexible tutorial rooms and studios for large and small group teaching; a 96-place science teaching laboratory, and associated preparation facilities; a modern learning commons area for non-timetabled learning and collaboration; dedicated spaces for postgraduate students; an advanced computer laboratory; staff offices and interaction areas; a student administrative centre; as well as spaces for students, staff and the community to engage and collaborate.

Hutchies' Team Leader: Michael Michell
 Hutchies' Project Manager: Steven Hodgins
 Hutchies' Administrator: Dominic Tyacke
 Hutchies' Site Manager: Scott Woods
 Hutchies' Supervisor: Clayton Ballard
 Hutchies' Cost Planner: Terry Lloyd
 Architect Firm: Nettleton Tribe Architects
 Struct. & Civil Engineer Consult: Aecom
 Quantity Surveyor: Rider Levett Bucknall
 Electrical Consultant: WSP Group
 Client: University of Sunshine Coast

CSIRO – GLASSHOUSE EXTENSION & REFURBISHMENT

Job Value: \$1,288,656

Job Description: The CSIRO Glasshouse extension and upgrade is located on the eighth level of the South Building Queensland Bioscience Precinct at the University of Queensland's St Lucia campus. Queensland Bioscience Precinct (QBP) is the largest research facility in Australia with a world-class environment dedicated to human, plant and animal bioscience research bringing together scientists from multiple CSIRO business units and the Institute for Molecular Bioscience. It comprises four major buildings with more than 700 researchers working within the laboratories and facilities. The Glasshouse extension and upgrade project will expand the current facility on the level eight rooftop from four compartments to six and provide an upgrade to the existing glasshouses.

Hutchies' Team Leader: Cy Milburn
 Hutchies' Project Manager: Cameron O'May
 Hutchies' Administrator: Benjamin Plunkett
 Hutchies' Site Manager: Adam Beard
 Hutchies' Cost Planner: Cameron O'May
 Architect Firm: Sinclair Knight Merz (SKM)
 Struct. & Civil Engineer Consult: Sinclair Knight Merz (SKM)
 Client: CSIRO Business and Infrastructure Services – Capital works

COMMUNITY CARE UNITS, BUNDABERG

Job Value: \$6,450,610

Job Description: The Bundaberg CCU project involves the design and construction of a resi-



An artist's impression of the Community Care Units under construction in Toowoomba.

dential, community based, recovery orientated, treatment and integration facility. Hutchies will deliver five new buildings comprising 20 single bed units; administration building housing clinical and non-clinical support; communal building to support community activities; gazebo to create an alternate more intimate meeting space; and integrated landscaped gardens with car park and bin enclosures.

Hutchies' Team Leader: Michael Michell
 Hutchies' Project Manager: Dave Smythe
 Hutchies' Administrator: Melanie Longland
 Hutchies' Site Manager: Bert Heitbaum
 Hutchies' Cost Planner: Terry Lloyd
 Architect Firm: Peddle Thorp
 Struct, Civil, & Elec Eng Consult: ARUP
 Client: QLD Government Capital Projects Unit, Health & Infrastructure Branch

NDIS SYDNEY OFFICE

Job Value: \$955,350

Job Description: The NDIS Sydney project is a new 600m² office fit-out on Level 9, Tower C of the existing Centennial Plaza office complex. This fit-out is for 'back of house' administration accommodation for the National Disability Insurance Scheme (NDIS). Typically, all the new facilities incorporate 'best practice' accessible design features such as colour contrasting for the visually impaired, wheelchair friendly joinery, hearing loops and customisable workstations.

Hutchies' Team Leader: Mick Connolly
 Hutchies' Project Manager: Danica Taylor
 Hutchies' Administrator: Danica Taylor
 Hutchies' Site Manager: Shaun Power
 Hutchies' Cost Planner: Mick Connolly
 Architect Firm: SPACElift Design Consultancy
 Services Consultant: WSP Group
 Client: National Disability Insurance Agency

444 QUEEN STREET ROOF WORKS

Job Value: \$236,091

Job Description: Various works within the plant room and roof at the inner city 23-storey level tenanted commercial building.

Hutchies' Team Leader: Cy Milburn
 Hutchies' Project Manager: Chris Chainey
 Hutchies' Administrator: Marcus Hoddinott
 Hutchies' Supervisor: David Barker
 Hutchies' Cost Planner: Trevor Bruiners
 Mechanical Consultant: EMF Building Tuning
 Acoustic Engineering Consultant: EMF Building Tuning
 Struct. Engineering Consult: ARUP
 Client: Opus Capital Limited
 Client Representative: Integra Asset Management

NAMBOUR ENERGEX OFFICE ALTERATIONS

Job Value: \$1,552,627

Job Description: The scope of works includes the complete internal refurbishment and upgrade to existing Nambour Energex depot offices undertaken in two stages, while the onsite office staff are maintaining operations. The interaction of the work content will demand close communication with Energex staff. In addition, there are external works to the car park which involve coordination to maintain car parking facilities in a staged process.

Hutchies' Team Leader: Cy Milburn
 Hutchies' Project Manager: Christopher Chainey
 Hutchies' Administrator: Victor Poon
 Hutchies' Supervisor: Lee Gagliardi
 Hutchies' Cost Planner: Trevor Bruiners
 Architect Firm: Arkhefield
 Struct. Engineering Consultant: Bligh Tanner
 Civil Engineering Consultant: Bligh Tanner
 Electrical Consultant: WPS
 Client: Energex
 Client's Representative: Ranbury Management Group

ROSNY COLLEGE SCIENCE LABORATORY

Job Value: \$1,076,110

Job Description: A two-stage project consisting of the refurbishment of existing and construction of new teaching laboratories. Stage one involved the internal reconfiguration and refurbishment of the electronic and language laboratories including alterations to the existing chemical and science stores. This work was completed in time for the commencement of the 2014 teaching year. Stage two consists of major refurbishment of the existing science laboratories including construction of four new laboratories, a prep room, staff offices and greenhouse.

Hutchies' Team Leader: Mick Connolly
 Hutchies' Project Manager: Michael White
 Hutchies' Administrator: Victoria Logan
 Hutchies' Site Manager: Ross Higgins
 Hutchies' Cost Planner: Brian O'Dwyer
 Architect Firm: BPSM Architects – Damian Rogers
 Struct. Engineering Consult: Aidanmark – Leigh Saltmarsh
 Electrical Consultant: Engineering Solutions Tasmania – David Devenish
 Client: Department of Education Tasmania – Min Harmen
 Other: Rosny College – Daryl Moir (Principal)



Hutchies has completed the internal refurbishment of Hobart's Pinnacle observation shelter at the summit of Mt Wellington.

USC, MOTION LABORATORY

Job Value: \$1,179,465

Job Description: This project at the University of Sunshine Coast's Sippy Downs campus is a one-storey laboratory which includes a purpose-built running track passing through the lab area.

Hutchies' Team Leader: Michael Michell
 Hutchies' Project Manager: Steven Hodgins
 Hutchies' Administrator: Dominic Tyacke
 Hutchies' Site Manager: Scott Woods
 Hutchies' Supervisor: Dominic Taylor
 Hutchies' Cost Planner: Terry Lloyd
 Architect Firm: Nettleton Tribe Architects
 Struct. & Civil Engineer Consult: Aecom
 Quantity Surveyor: Rider Levett Bucknall
 Electrical Consultant: WSP Group
 Client: University of Sunshine Coast

PINNACLE OBSERVATION BUILDING, HOBART

Job Value: \$95,290

Job Description: This project involved the refurbishment of the interior of the Pinnacle observation shelter at the summit of Hobart's picturesque Mount Wellington, 1,271m above sea level. The Hobart City Council undertook to improve visitor comfort and experience, estimating that more than 300,000 people visit the site annually. The works included installing new signage, stainless steel flashing between the existing roof and glazing, complex concrete seats, electrical heated concrete seating, switchboard, concrete landings, flooring treatment, public telescopes, painting, copper door repairs and repair of existing skylight.

Hutchies' Team Leader: Mick Connolly
 Hutchies' Project Manager: Michael White
 Hutchies' Administrator: Grant Davey
 Hutchies' Site Manager: Ben Cullen
 Hutchies' Cost Planner: Brian O'Dwyer
 Architect Firm: Urban Designer: Ken Betlehem
 Electrical Consultant: Engineering Solutions Tasmania
 Client: Hobart City Council

ESK VIEW TERRACES

Job Value: \$1.9M

Job Description: Extensions and additions to existing two-storey terraces containing government departments and accommodation. Works include two new lifts and concrete staircase, additional two storeys on top of existing building and extending out two levels.

Hutchies' Team Leader: Mick Connolly
 Hutchies' Project Manager: Carl Fiedler
 Hutchies' Administrator: Ian Ramsden
 Hutchies' Site Manager: David Budgeon
 Hutchies' Cost Planner: Brian O'Dwyer
 Architect Firm: Philp Lighton Architects
 Struct. & Civil Engineer Consult: Aidanmark
 Electrical Consultant: Engineering Solutions Tasmania
 Client: Esk Property Investments
 Client Project Manager: Stanton Management Group

SCU LEARNING CENTRE AND ENGINEERING BUILDING

Job Value: \$21.5M

Job Description: Construction of a new learning centre facility for the Southern Cross University's Lismore campus and the refurbishment of the existing engineering building. Works include extensive inground foundations, exposed off form concrete and timber facades, green star service designs and high level internal finishes.

Hutchies' Team Leader: Paul Hart
 Hutchies' Project Manager: Grant LeBoutillier
 Hutchies' Administrator: Murray Emmerson
 Hutchies' Site Manager: Mick Dood
 Hutchies' Supervisor: Lindsay Good & Stefan Sedelaar
 Hutchies' Cost Planner: Steven Kourevelis
 Architect Firm: SKM Architects
 Struct. & Civil Engineer Consult: MPN Consultants
 Quantity Surveyor: Turner and Townsend
 Electrical Consultant: Rudds Engineering
 Client: Southern Cross University



Construction has started on a new learning centre facility at the Southern Cross University's Lismore campus.



Hutchies is undertaking the expansion and refurbishment of CSIRO's rooftop glasshouses facilities on the University of Queensland campus.



Site engineer, Alex Gonano, of Sydney, has returned from a great trip that took him to England, Spain, Italy, USA and his favourite spot of all – the Guinness brewery in Dublin.



Jeff Miller and friends spent a week in the Aussie Outback, role playing the Wild Hogs by quenching their thirsts and displaying their Hutchies' colours at every opportunity along the way.



Man mountain, Peter Singleton, challenges the size of the mighty Mount Cook in New Zealand.



Dave McNamara, from Hutchies' Sydney team, has Halong Bay, Vietnam, as a backdrop to show off some of his bling purchased on a cruise from Hong Kong to Singapore.

**TRAVELLING
UNDIES
& BUDGIES**



Meet Vinnie – not a Hutchies' staffer who has worked himself to death, but rather the resident skeleton from St Vincent's Private Hospital, Toowoomba, who wouldn't be seen dead without his Hutchies' gear on.



Jack Hutchinson Jr, with friends Michael Outterside, Sally Blake and Annie Hill enjoyed the Sydney Mardi Gras.



Nathan Palmer (ex Hutchies), Andrew Ebbott, Gareth Davies (Hutchies) and Angus McVay were suitably attired for the occasion.

HATCHED

HUTCHIES' TRUTH



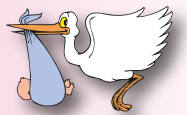
LEFT: Logan Amos Hardy, new arrival for Toowoomba team's Duane Hardy and his wife, Rachael.



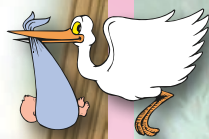
ABOVE: Luke Petersen and partner, Jemma Kiernan, celebrated the arrival of baby boy, Ryan Lars Petersen, on Australia Day, at the Cairns Base Hospital.



Ivy Maree Wallace, born at John Flynn Hospital, is the first child for Rick Wallace and wife, Keely Mohr.



LEFT: Jay Archer (Sunshine Coast team) is a proud dad to Paisley Carolyn. Jay and Tess McLennan welcomed baby Paisley on March 12.



Meet Alfie Paul, new son for proud dad, Julian Gourgaud (Toowoomba team) and wife, Tiffany.



Arie Luca Edwards is a new son for Wade and Tegan Edwards on the Sunshine Coast. Arie is shown with sister, Adylina, and brother, Aston.

Fight night for trio



Hutchies' Rocky Malan waits for a response from the opposition corner.

TEAM members from Tweed/Mackay threw their hats in the ring to take part in Fight Like a Pro event staged at Jupiters Casino on the Gold Coast.

Jared 'Rocky' Malan took out his opponent

in the first round – achieving the second KO for Fight Like a Pro in 245 fights.

Unfortunately, Adam Francis and Levi Corby did not fare so well with both defeated.

Tree Top Challenge



Al Gundy takes to the Tree Top Challenge with gusto.

MORE than 50 Hutchies' team members and their families enjoyed the Social Club outing at the Mount Tamborine Tree Top Challenge.

The Mount Tamborine Tree Top Challenge is Australia's first adventure

park in the tree tops and is fun, challenging and appealing to the entire family.

There are 85 challenges over five courses, combining rope and wire challenges in nine acres of bushland.

Soccer bond strong with Wynnum



Josh Tanner on the pitch for the Under 18 Wolves.

THE long-standing relationship between Hutchies and the Wynnum Districts Soccer Club continues today with Josh Tanner, son of Hutchies' cost planner, Martin Tanner, playing for the Under 18 Wolves in the Trophy Superstore Brisbane Premier League competition.

Chairman Scott Hutchinson is Patron for the Wolves after his great-grandfather, John (Jack) Hutchinson I, helped establish the Wynnum Soccer Football Club in the 1920s.

Both of his sons, Eric and Jack II, played for the club, with Eric as captain.

Josh is currently studying architecture at the University of Queensland.



Hutchies' involvement with the Wynnum Soccer Football Club began in the 1920s.

Great prizes to be won!

Scratch-its

If your Hutchies' Scratchie matches the lucky numbers listed you are a winner! To claim your prize telephone Hutchies on (07) 3335 5000.

Prizes compliments of Hutchinson Builders.

No. Prize

28101 Hutchies T-Shirt
28156 Hutchies Undies
28213 Tape measure
28377 Hand Sander
28399 Hutchies Cap
28455 Jack's Tequila
28554 Paint brush set
28687 Hutchies T-Shirt
28774 Screw Driver Set
28888 Drill Bit Set

No. Prize

28896 Hutchies Undies
29900 Chalk Line
29926 Jack's Tequila
30000 Paint brush set
30048 Hutchies T-Shirt
30132 Jack's Tequila
30298 Hutchies G-string
30334 Screw Driver Set
30369 Hutchies Undies
30444 Jack's Tequila

No. Prize

30589 Tape measure
30698 Hutchies Cap
30778 Jack's Tequila
30884 Hutchies T-Shirt
30985 Hutchies Undies
31111 Hutchies T-Shirt
31152 Hutchies Undies
31245 Tape measure
31365 Hutchies Undies
31440 Hutchies Cap

No. Prize

31567 Jack's Tequila
31622 Paint brush set
31748 Hutchies T-Shirt
31870 Screw Driver Set
31997 Drill Bit Set
32005 Hutchies Undies
32154 Chalk Line
32204 Jack's Tequila
32897 Paint brush set
33523 Hutchies T-Shirt

No. Prize

32698 Hutchies G-string
32800 Screw Driver Set
33104 Hutchies Undies
33258 Jack's Tequila
33301 Tape measure
33487 Hutchies Cap
33551 Jack's Tequila
33658 Hutchies T-Shirt
33789 Hutchies Undies
33800 Chalk Line